

# Classic Series Biological Safety Cabinet

**HR30-IIA2/HR40-IIA2**



## Main Applications

Professional partial air purification equipment, the cabinet is suitable for cell biology, microbiology, biomedicine, biosafety and other related laboratories. The Classic Series Cabinet provides the most essential protection and isolation for biosafety.

### Haier Biomedical India Private Limited

DTJ: 224, DLF-tower – B, Jasola District  
Center, Jasola – 110025, New Delhi  
Email: [haite.india@haierbiomedical.com](mailto:haite.india@haierbiomedical.com)  
Website: [www.haiermedical.com](http://www.haiermedical.com)



Haier Biomedical  
International



Haier Biomedical  
International



@haiermedicalint



@haierbiomedicalint



Haier Biomedical  
International

## Biological Safety Cabinet: Classic Series, Type A2

### Product Advantages



- Digital LCD screen
- Real-time display of key parameters: down-flow velocity, inflow velocity, airflow volume, static pressure, negative pressure, accumulative running time of fan, accumulative running time of UV lamp, and remaining life of filter
- Audible and visual alarms for abnormal parameters
- Clock setting function
- UV lamp sterilization timer function
- Quality 304 stainless steel operation platform without screws, no accumulation of contaminant
- Dismountable air in-flow plate, easy to clean and sterilize
- The internal walls on three sides of operation area is constructed by a single plate, and the 12mm arc angle corner leaves no hidden cleaning areas
- The volume of the liquid tank is over 4L, equipped with an outlet valve for convenient cleaning and maintenance
- Patented air flow blocking is adopted at the upper edge and both edges of the front window to eliminate the exposure of microorganisms

### Ergonomic

- **UV Lamp One-touch Pre-set**  
The UV Lamp can store the user's settings and habits, and can be preset with a certain startup delay just by pressing down one key, saving valuable time for the user
- **Universal Casters with Built-in Threaded Support Legs**  
The underframe is designed with universal casters for moving the cabinet conveniently, and the built-in threaded support legs can prevent the propagation of bacteria

### Professional

- **Digital display of operating parameters**  
Real-time digital display of down flow, inflow, exhaust volume, filter remaining life, UV lamp remaining life, negative pressure and positive pressure

## Safe

- Abnormal operation condition alarm

Audible and visual alarms in the form of voice or text will be presented when the air level exceeds 20%, and door height (high or low) or work area temperature exceeds limits

- Filter end-of-life reminder

Pressure transducer monitors the resistance variation of the filter to determine the remaining life of the filter, and will warn the user when the remaining life is below 10%

- UV lamp end-of-life reminder

The microcomputer will monitor the service time of the UV lamp, and will warn the user to replace the UV lamp when its remaining life is less than 10%

- Interlocking feature to ensure high safety and reliability

- Patented technology includes: UV lamp, UV lamp interlocking control, front window, fan and interior light are interlocked to prevent any leakage of UV rays or microorganisms.
- Like the Type B2 safety cabinet with internal & external fans interlocked, the external fan will be activated immediately when the safety cabinet is powered on, and the internal fan will be deactivated immediately when the safety cabinet is powered off. When the air inflow is lower than the set limit, the internal fan will be deactivated, and the external fan will continue working, accompanied with audible and visual alarms. When the internal fan is deactivated while in operation, the external fan will continue operating, accompanied with audible and visual alarms

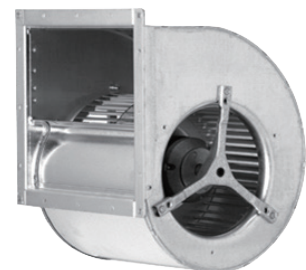
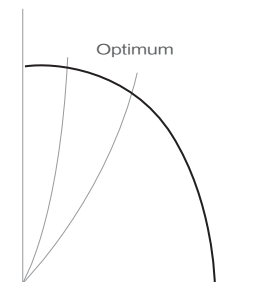
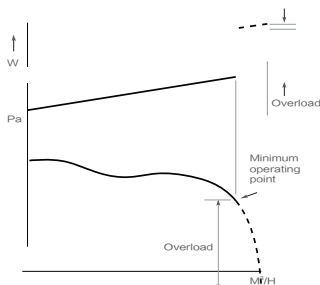
## Key Components

- Ultra-Low Particulate Air (ULPA) Filter (U15)

- The ULPA filter is made from moisture-proof and fireproof glass fibers and has an efficiency up to 99.9995% filtering 0.12 $\mu$ m solid particles, fully complying with cleanliness requirements of the USA FED STD 209E Grade 1 (or ISO 14644-1 Grade 3)
- ULPA filter can supply vertical air flows to the workbench, preventing the samples from being contaminated
- The filter can be scanned point by point to ensure high performance, reliability and safety

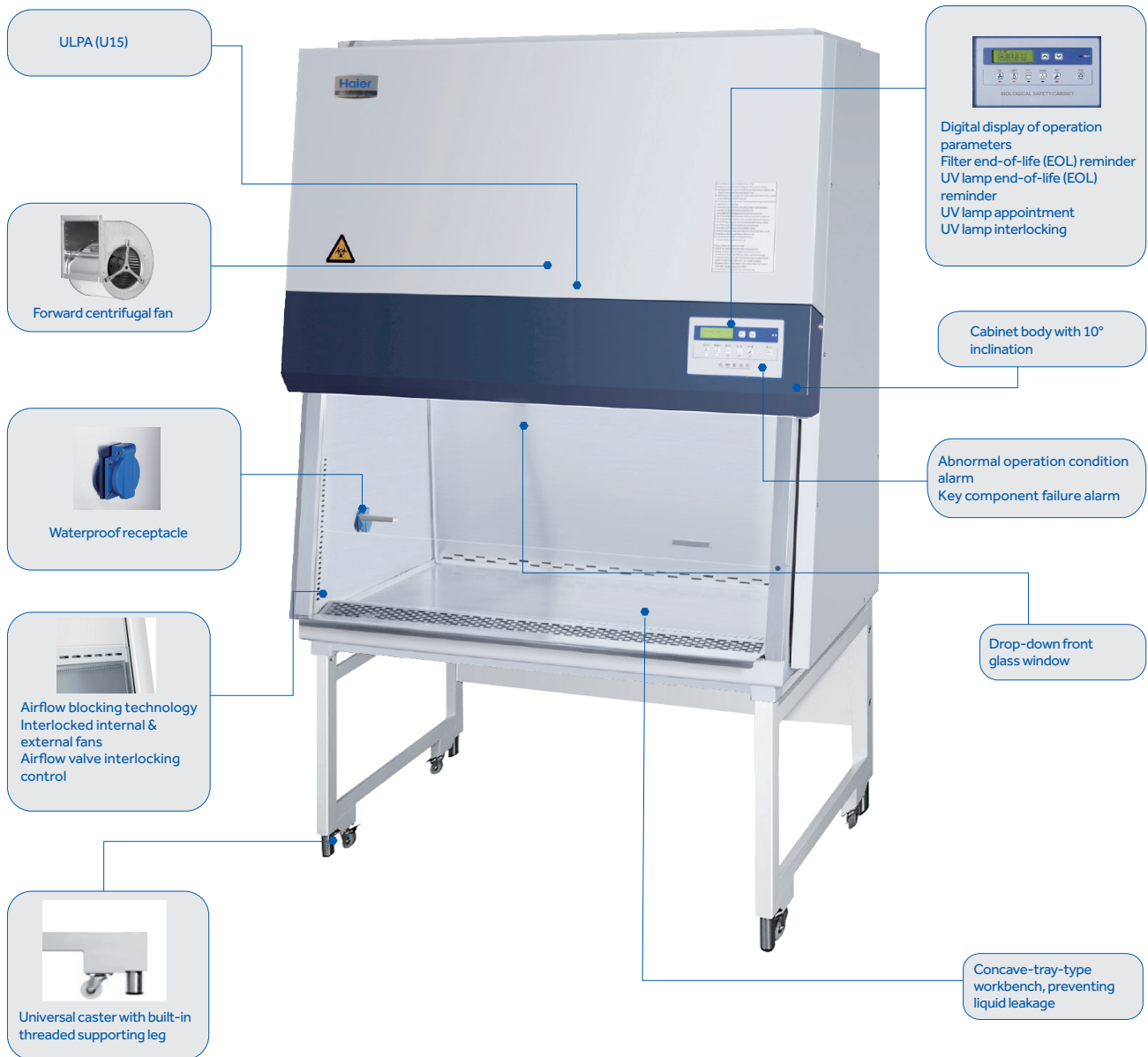
- Maintenance-free fan system

- Forward centrifugal fan with air inflows at both sides of the motor, reducing noise to a very low level. It is self-cooling, low energy consumption, and high reliability
- Optimal balance between air supply and energy consumption
- Stable air flow for safety cabinet upon precise control of fan operating voltage



## Biological Safety Cabinet: Classic Series, Type A2

### Product Configuration

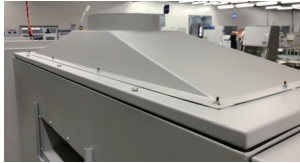


## Specifications



Model		HR30-IIA2	HR40-IIA2
Working Voltage & Frequency (V/Hz)		220-240V 50/60HZ	
Power (VA)		1300	
Power of Blower (W)		AC 540/625	
Airflow Circulation		70% Downflow,30% Exhaust	
Main Filter Typical Efficiency		ULPA ,U15,99.9995%@0.12um	
Exhaust Filter Typical Efficiency		HEPA ,H14,99.995%@0.3um	
Exhaust Filter		Single	
Downflow Velocity (m/s)		0.30	
Inflow Velocity (m/s)		0.53	
Lighting Intensity (Lux)		≥1100	≥1200
Net/Gross Weight	kg	220/248	258/305
Internal Dimensions (W*D*H)	mm	900*610*680	1167*610*680
External Dimensions (W*D*H)	mm	1100*790*2200	1360*790*2200
Packing Dimensions (W*D*H)	mm	1155*905*1720	1415*905*1720
Container Load (20'/40'/40'H)		10/20/20	8/16/16
Alarm		Sound and Flash	
Certifications		CE, TÜV SÜD Mark, NMPA(CFDA)	
Solid or Glass Sides		Solid	
Bench or Stand		Stand only	
Service Ports (Port Holes)		Y	
Standard Included		LED light	
		UV lamp	
		Power outlet socket (EU Type)	
		EU Type conversion socket	
		Manual Gas Tap	
Accessories and Optionals		Manual Vacuum Tap	
		Exhaust Air Hood	
		Different Plug Type	
		Extra Socket	
		Exhaust Pipe	
		Height-adjustable support	
		1.5mm thickened workbench and liner	
		316 Stainless steel workbench and liner	
		VHP Sterilization Kit	
		IR Sterilizer	
		Manual Compressed Air Tap	
		Manual Water Tap	
		Additional socket for data (RS232/RS485)	
		Activated carbon kit	

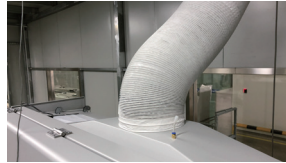
## Optional components



Exhaust air hood



Valve, blue, for compressed air



Exhaust pipe



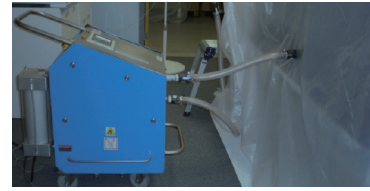
Valve, green, for water



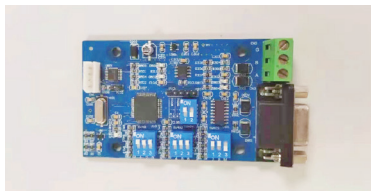
1.5mm thickened workbench and liner



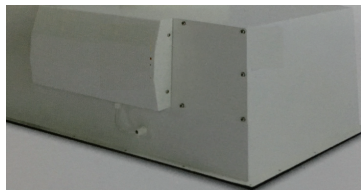
316 stainless steel workbench and liner



VHP sterilization kit



Data port (RS232/RS485)



Activated carbon kit



Height-adjustable support



Europe, UK and USA standard power supply sockets

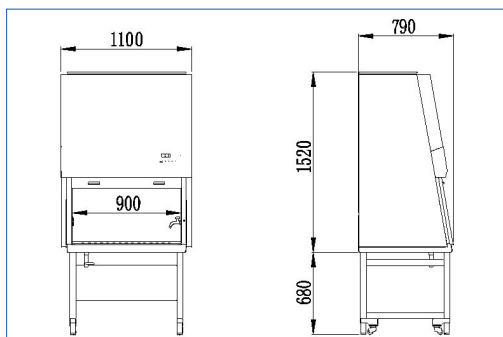


Europe, UK and USA standard power supply plugs

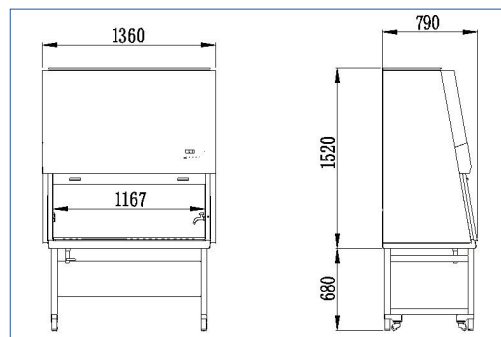


IR sterilizer

## Product Dimensions



HR30-IIA2



HR40-IIA2